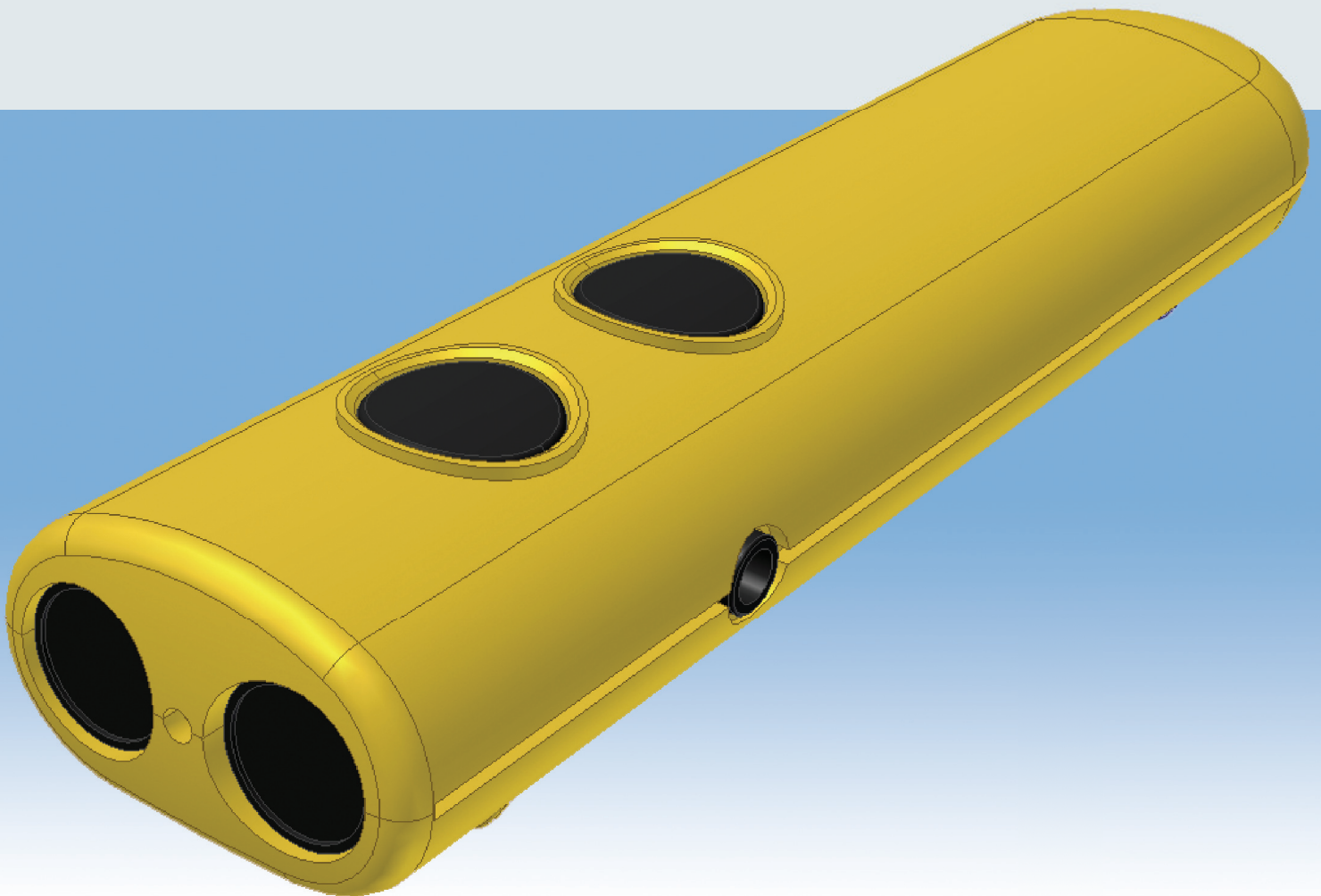


# Ray<sup>®</sup>

our handy mobility aid !



CARETEC - HOME OF QUALITY PRODUCTS



# Ray®

Ray is a small, extremely sensitive electronic mobility aid emitting acoustic and / or tactile signals. It has been designed to complement the ordinary long cane. Its ultrasonic emission can be compared to the cone of light of a torch and will help you to recognize obstacles much faster and get a more detailed knowledge of your environment.

Ray is a small and handy lightweight (60 g). It works with 2 long-lasting AAA batteries and fits in every pocket.

- Obstacles up to a distance of 2,85 m will be recognized and announced to the user via acoustic signals or vibrations (the user may choose whichever is most convenient to him).
- A special Escape mode enables the user to locate small gaps such as door entrances or passageways through a crowd of people (again the user can choose between acoustic or tactile feedback).
- Ray does also include a light probe function with either acoustic or tactile announcement.

This way Ray will bring things to light which are inaccessible for the ordinary white cane. Ray will soon become a valuable companion!

Ray is extremely easy to use and will only need a short training period. However, we do recommend a mobility training to become acquainted with the device!

TECHNICAL DETAILS: stylish case; dimensions: 12 x 29 x 19 mm; weight: 60 g; ready to operate with only 2 buttons; earphone socket; designed to work with 2 x 1.5 V AAA batteries as well as rechargeable batteries; fixed lanyard to carry it around the neck; warranty: 1 year

Complete Set: Ray, lanyard, 2 x 1.5 V AAA batteries, printed user manual

Optional: Trainer Kit

CARETEC GMBH  
Stubenbastei 1, A-1010 Vienna, Austria  
Tel: (+43 1) 513 80 81- 0; Fax: - 9  
office@caretec.at; www.caretec.at

represented by: